



90W (1/8 HP)

INDUCTION MOTORS Frame size 90mm sq. (3.54 in.sq.)

Single-Phase, Three-Phase

LEAD WIRE TYPE

SPECIFICATIONS

CONTINUOUS DUTY, INSULATION CLASS A or E, 4POLES

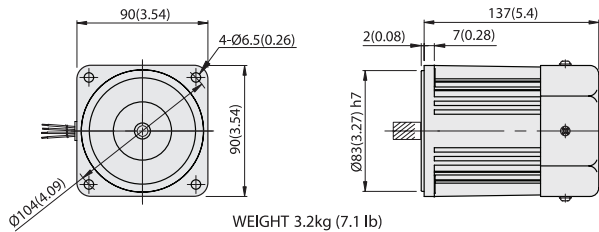
Model	Output		Voltage (V)	Frequency (Hz)	Rated						Starting Torque			Capacitor (μF)
	(HP)	(W)			Input (W)	Current (A)	Torque			Speed (rpm)	(kg-cm)	(N-m)	(oz-in)	
							(kg-cm)	(N-m)	(oz-in)					
L9190□C	1/8	90	1∅100	50	190	1.90	6.8	0.666	94.43	1300	4.5	0.441	62.49	25
L9190□D	1/8	90	1∅200	50	190	0.80	6.8	0.666	94.43	1300	5.4	0.529	74.99	7
L9190□B	1/8	90	1∅220	60	200	1.0	5.5	0.539	76.38	1600	5.1	0.500	70.82	6
L9190□E	1/8	90	1∅115	60	200	1.80	5.5	0.539	76.38	1600	4.5	0.441	62.49	20
L9190□X	1/8	90	1∅220~240	50	200	0.90	6.8	0.666	94.43	1300	5.1	0.500	70.82	6
L9190□U	1/8	90	3∅200	50	180	0.64	6.8	0.666	94.43	1300	17	1.666	236.08	-
L9190□T	1/8	90	3∅200~230	50	180	0.66	6.5	0.637	90.27	1350	19	1.862	263.85	-
L9190□S	1/8	90	3∅380~415	50	180	0.38	6.5	0.637	90.27	1350	19	1.862	263.85	-
L9190□R	1/8	90	3∅440	50	180	0.34	6.5	0.637	90.27	1350	19	1.862	263.85	-
L9190□R	1/8	90	3∅440	60	180	0.32	5.5	0.539	76.38	1600	15	1.470	208.30	-

- * Model in grey screen represents the motors with THERMALLY PROTECTED according to UL regulation.
- * Model in dark grey screen represents the motors with THERMALLY PROTECTED according to CE regulation.
- * In case of some models certificated for export, the special cord like CE or UL is added after the existing model no. ex) L9160□XH-CE, L9160□EH-UL.
- * Insulation class for motors which acquired certificates for export is B.

DIMENSIONS

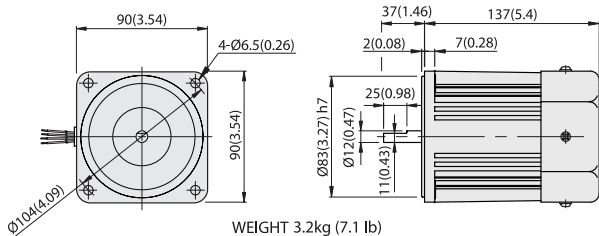
L9190P□H

Unit: mm(inch)



WEIGHT 3.2kg (7.1 lb)

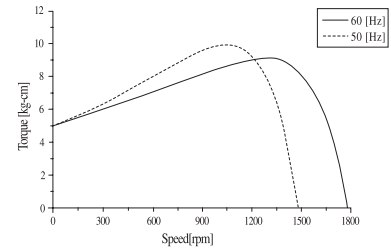
L9190D□



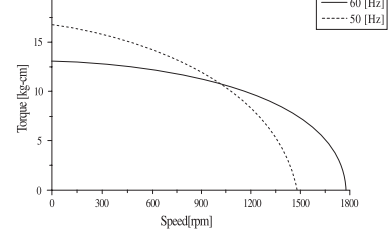
WEIGHT 3.2kg (7.1 lb)

SPEED-TORQUE CURVE

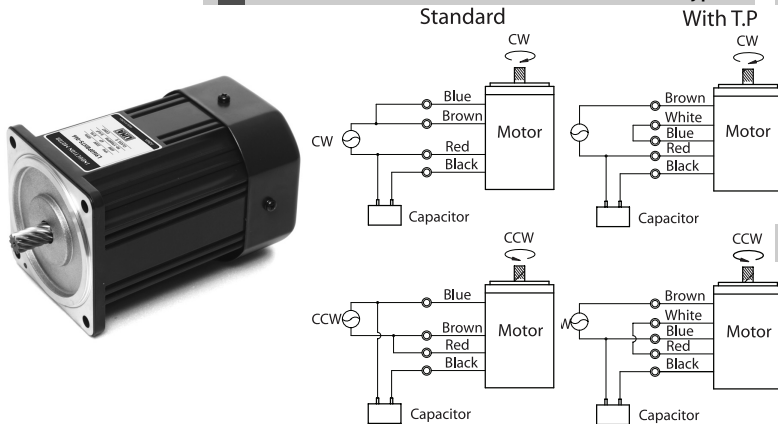
Single phase L9190□□



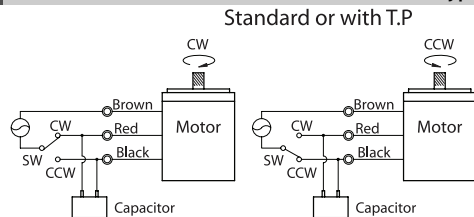
Three phase L9190□□



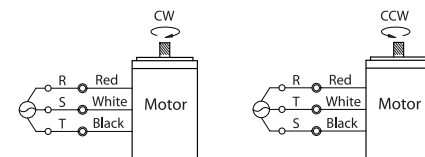
CONNECTION DIAGRAMS (4-lead wire type)



CONNECTION DIAGRAMS (3-lead wire type)



CONNECTION DIAGRAMS (3 phase)



The direction of rotation is seen from the end of motor shaft.

INDUCTION MOTORS